

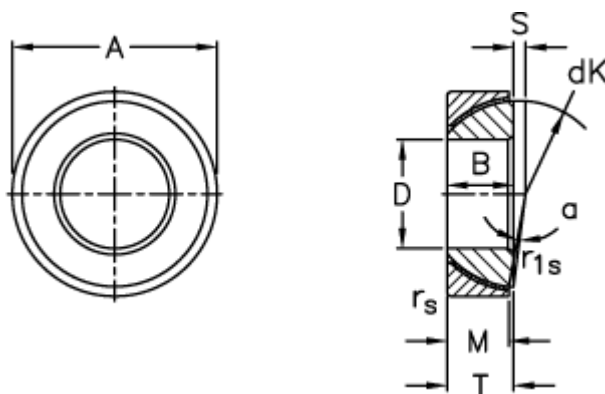
Data Sheet



Article number: 03510050

Description: Fluro Rod end GE 50SW

Measures



A	= 80 0 -0,016	Static load C0 (kN)	= 470
B	= 20	T	= 20 +0,25 -0,40
D	= 50 0 -0,012	Tilt angle	= 1.5
dK	= 74	Weight	= 455
Dynamic load C (kN)	= 235		
M	= 19		
rs, r1s min	= 1		
S	= 4.3		